

FLORENCE RIDEOUT NEWSLETTER

MARCH 14TH, 2025

What is
new at
FRES?

Pi Day is today, and Saint Patrick's Day is on Monday; there's something for everyone over the next few days! We would like to acknowledge that our community fully supports its educators. Thank you, voters!



This week, first graders teamed up with their fifth-grade buddies to create leprechaun traps, fourth graders planted seeds they will grow in their greenhouses to sell at the annual plant sale, and our kindergarten crew practiced for the upcoming K-2 Concert.

A busy week, but a great week!



**THANK
YOU!**

4th Grade
Economic Plant Sale

Thank You! To our amazing volunteers! Without the help from community members and parents these events would not be able to function.

LYNDEBOROUGH CENTRAL NEWSLETTER

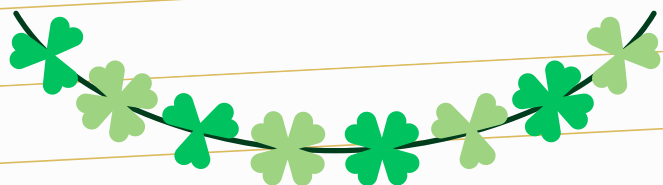
What is
new at
LCS?



This week at LCS, students enjoyed the warmer weather at recess! Kindergarteners began listening to Saint Patrick's Day read alouds to prepare for the leprechaun's visit on Monday. Students have been practicing addition and subtraction problems in math!

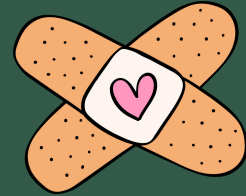
All kindergarteners have been working very hard in music to prepare for their Spring Concert! On Tuesday, March 18th, we will be going to FRES for a dress rehearsal. Dismissal/ Parent Pick-up will be at FRES at 2:25PM on 3/18. The Spring Concert is next Thursday, March 20th at FRES! Students are asked to arrive at 5:45PM!

Just an FYI... substitute teachers are needed!!!! If you are interested, please contact Lori Spurrell (l.spurrell@sau63.org OR 603-732-9227). Have a great weekend!



NURSE

MARISSA



Hello LCS and FRES Families,

I would like to start by thanking those of you who have stepped up in monitoring your children and keeping them home when not feeling well or just out of precaution. Your adherence to this has helped to decrease the spread of illness; the staff, students, and myself thank you greatly!

I would like to ask parents and guardians at this time to try to ensure your child has something of nutritional value before coming to school each day. I see quite a few students in the FRES Health Office each morning feeling unwell due to lack of nutrition. According to the CDC “The American Academy of Pediatrics recommends that children and adolescents consume breakfast for healthier body weights, improved nutrition, better memory, better test scores, and better attention spans.” (Terry AL, Wambogo E, Ansai N, Ahluwalia N., 2020) If you have any difficulties with this, please reach out to LCS or Florence Rideout Elementary directly so we may help with the assistance requested.

Spring is nearly upon us at this time and that means we are nearing the end of the 2024-2025 school year. With that being said, I would like to bring your attention to physical exams. If your child is in 5th grade at this time, moving up to 6th grade in the fall, your student(s) must have a physical within the last year on file with the health office per policy JLCA in the SAU63 District handbook. The middle-high-school nurse, Mrs. Bertoncin, I will be making outreaches to students without physicals, and please note that your child will be unable to participate in athletics without a current physical. If you have a physical from within the last year, please submit it to the health office so that we may reduce the incidence of outreaches that are unnecessary, I am happy to take them as soon as you get them as this helps us to keep up with your child(ren)’s most recent health information. If you are unsure of your child's last physical on file with the school, please email me at m.hofstetter@sau63.org.

Thank you so much, be well, and think SPRING!

Marissa Hofstetter, RN, BSN
LCS&FRES School Nurse



CDC Link:

<https://www.cdc.gov/nchs/products/databriefs/db386.htm>

MUSIC ROOM WITH MS. K!

Greetings from the music room!

We are very busy getting ready for our first Spring Concert, which is on March 20th at 6 pm. This performance will feature kindergarten, 1st, and 2nd grade students singing folk songs from the US, Argentina, Canada, Scotland, and elsewhere. 3rd, 4th, and 5th graders will have their turn on May 29th, and band students will also get a chance to perform that night. Stay tuned for more details on that concert!

In classes k-2 has been diligently preparing for their concert. We have learned sign language and dance moves, chosen soloists, written lyrics, and added instrumental parts to our songs. They have practiced standing still to prepare for being on the risers, bowing after their performance, and talked about what to do when you're nervous on stage. I can't wait to see how they do in a few weeks!

3rd grade has been learning about the instrument families and how they make sound. So far we have covered the string family and the percussion family, and started the brass family. In the next few weeks they will learn how to distinguish brass from woodwind, listen to professionals play the instruments, and get to hold some of the instruments that we have here at FRES.

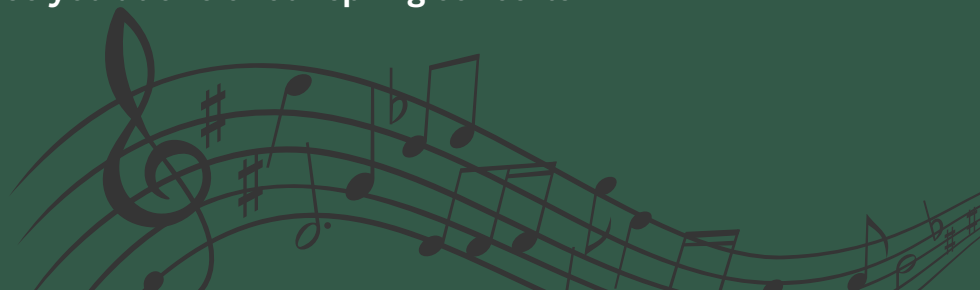
4th grade just completed a composition project where they learned and used 16th note rhythms for the first time. They worked as a group to compose 12-beat rhythms, then performed them on drums. They spent time evaluating their compositions and performances, and were given a chance to make changes to improve their musicality.

5th grade spent most of January and February learning a melody and harmony part on xylophones. They spent time sounding out the melody, practicing the skill, learning ostinato and bordun parts, then playing all the parts together as a group. As we start to practice concert music we will also start to discuss what options they will have in 6th grade to continue making music.

Band students are making great improvements! The fourth grade students are now practicing as one big band group, and 5th graders are learning an arrangement of a song that recently went semi-viral online ("Ask an Axolotl"). All the students are being challenged to learn songs for the performance in May, and they're excited to show you how much they've improved this year.

Thank you for reading, and I hope to see you at one of our spring concerts!

Morgan Kudlich (She/Her)
Music Educator, M. A. T.
Room 204



Riddle of the Week:

It belongs to you, but your friends use it more. What is it?

The first 5 students who know the answer and who come to the front office will receive a small prize.

Last weeks answer to the riddle is a "A joke"!

HELP!!!

SAU 63 is currently looking for substitute teachers for all areas and all grades. If you would like to be a part of our team, please fill out the applications today!



Upcoming Events

- 3/20 Spring Concert (K,1st,2nd)
- 3/28 No School- Teacher workshop
- 4/3 Passive ALICE Drill at FRES
- 4/4 Report Cards sent home
- 4/28-5/2 Spring Break No School

Clarification:

Early release hours
LCS is at 11:15AM
FRES is at 11:30AM



FRES & LCS Music

Spring Concerts!



Kindergarten, 1st, and 2nd Grade

WHEN: Thursday, **March 20th**

TIME: 6:00 pm - 6:45 pm

WHERE: FRES Gymnasium

Performers should wear something nice that isn't too warm, as the stage gets quite warm!

Performers should arrive at 5:45 already in their concert attire.

3rd, 4th, and 5th Grade

WHEN: Thursday, **May 29th**

TIME: 6:00 pm - 6:45 pm

WHERE: FRES Gymnasium

Performers should wear something nice that isn't too warm, as the stage gets quite warm!

Performers should arrive at 5:45 already in their concert attire.

Girls on the Run®

POWER, PURPOSE, AND POTENTIAL

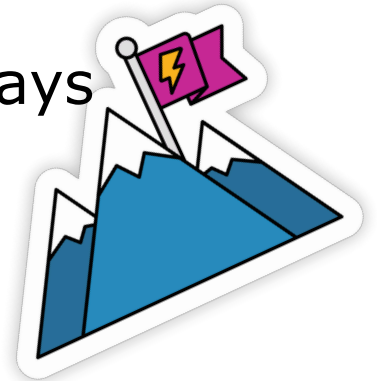
For Girls in 3rd, 4th, and 5th grade



Mondays and Wednesdays
from 2:45pm-4:15pm

Starts: March 26

Ends: May 31



Registration Opens February 10

Location: Florence Rideout Elementary

5K Celebration Event: May 31

New Hampshire Motor Speedway in Loudon, NH

Girls on the Run is a girl-empowerment organization that inspires participants to be joyful, healthy, and confident using evidence-based lessons that combine relationship building, community strengthening, and goal setting with physical movement.

To learn more about Girls on the Run, registration or financial assistance, please visit our website: www.girlsontherunnh.org



Girls on the Run is for EVERY girl!



School Year 2024-2025

Dear Parent/Guardian,

Each year, New Hampshire public and chartered public schools are required by state law (RSA 193-C) and federal accountability laws (Every Student Succeeds Act) to assess students using a standardized assessment. We utilize several assessments to comply with these requirements. For more details about our statewide assessments, please visit the [Office of Assessment](#) webpage.

Schools are working hard to coordinate the administration of the statewide assessments to ensure students have access to the assessments in a safe environment. If you have questions about test administration at your school, please contact the school principal/administrator.

Statewide assessments are an important part of a student's core educational program. They provide:

- An evaluation of student mastery of content and skills in core academic areas
- Serve as one tool for measuring the degree to which students are on track to graduate high school and be college- and career-ready
- Help inform future instruction in the classroom

Along with student work on classroom assignments, projects, essays, and local formative and summative assessments, statewide summative assessment results provide teachers and parents with important information about where students are on their path toward academic success. They also provide information on how to best support learning recovery.

Below are the required assessments for public and chartered public school students:

General Assessment	Grades	Content Area
NH Statewide Assessment System (NH SAS)	3–8	English Language Arts, Mathematics
NH Statewide Assessment System (NH SAS)	5, 8, & 11	Science
SAT School Day with Essay	11	English Language Arts, Mathematics
Alternate Assessment	Grades	Content Area
Dynamic Learning Maps (DLM)	3–8, & 11	English Language Arts, Mathematics
Dynamic Learning Maps (DLM)	5, 8, & 11	Science
English Language Proficiency	Grades	Content Area
ACCESS / Alternate ACCESS for ELLs	K–12	Reading, Writing, Listening, & Speaking

Please see the [2024-2025 Assessment Schedule](#) for specific information on state testing windows.

Results

Student results for the NH SAS are generally available immediately upon the student completing the test. Parents are able to view NH SAS student results through the [Family Portal](#) with an access code. Please contact your student's local school to request an access code for the Family Portal. Upon request, the local school can send a student's Individual Score Report (ISR) home before the end of the school year.

Lexile reading and **Quantile mathematics scores** will be available on the ISR. Visit this [resource](#) to find more information on how to use these measures to understand a student's reading and math level.

New Hampshire SAT School Day with Essay results will be available in May and June. Students can [access their scores](#) with a College Board student account.

Student score reports for the Dynamic Learning Maps Alternate Assessment will be available for parents to view through the Kite® Parent Portal. The Kite® Parent Portal address is: <https://parentportal.kiteaa1.org/login>. The local school may set up your account based on your email address or using a registration code. Please contact your student's case manager or teacher for access. Visit the [Parent Portal guide](#) for step-by-step directions on navigating the portal. The local school can also send student's individual score reports home to families.

WIDA ACCESS for ELLs / Alternate ACCESS test results should be provided by your student's case manager or teacher. Please contact your student's school directly with questions on when to expect to receive these results.

Practice Tests

- Parents may access the NH SAS Student Practice Site by going to the NH SAS Portal: <https://nh.portal.cambiumast.com/families.html>.
- College Board offers a range of SAT practice opportunities. Students who use the SAT practice tests are eligible for scholarships: [SAT Practice and Preparation – SAT Suite | College Board](#).
- Dynamic Learning Maps provides [resources for parents](#) to support student learning and examples of the testlets students may receive during testing. New Hampshire is a Year-End Model state.
- Preparing students for ACCESS for ELLs Online - Learn about the [ACCESS online test platform](#) and see the type of questions students will see on the test.

Average Testing Times

Grades 3-8	NH SAS	Dynamic Learning Maps (DLM) Alternate Assessment
English Language Arts / Reading	2 hours, 15 minutes	90-135 minutes
English Language Arts / Writing	2 hours	10-20 minutes
Mathematics	2 hours, 15 minutes	60-120 minutes
Grades 5, 8, 11	NH SAS - Science	DLM - Science
Science	2 hours	90-140 minutes
Grade 11	SAT School Day with Essay	DLM
English Language Arts and Mathematics	3 hours, 34 minutes	See testing times listed above for DLM English Language Arts / Reading, English Language Arts / Writing, and Mathematics